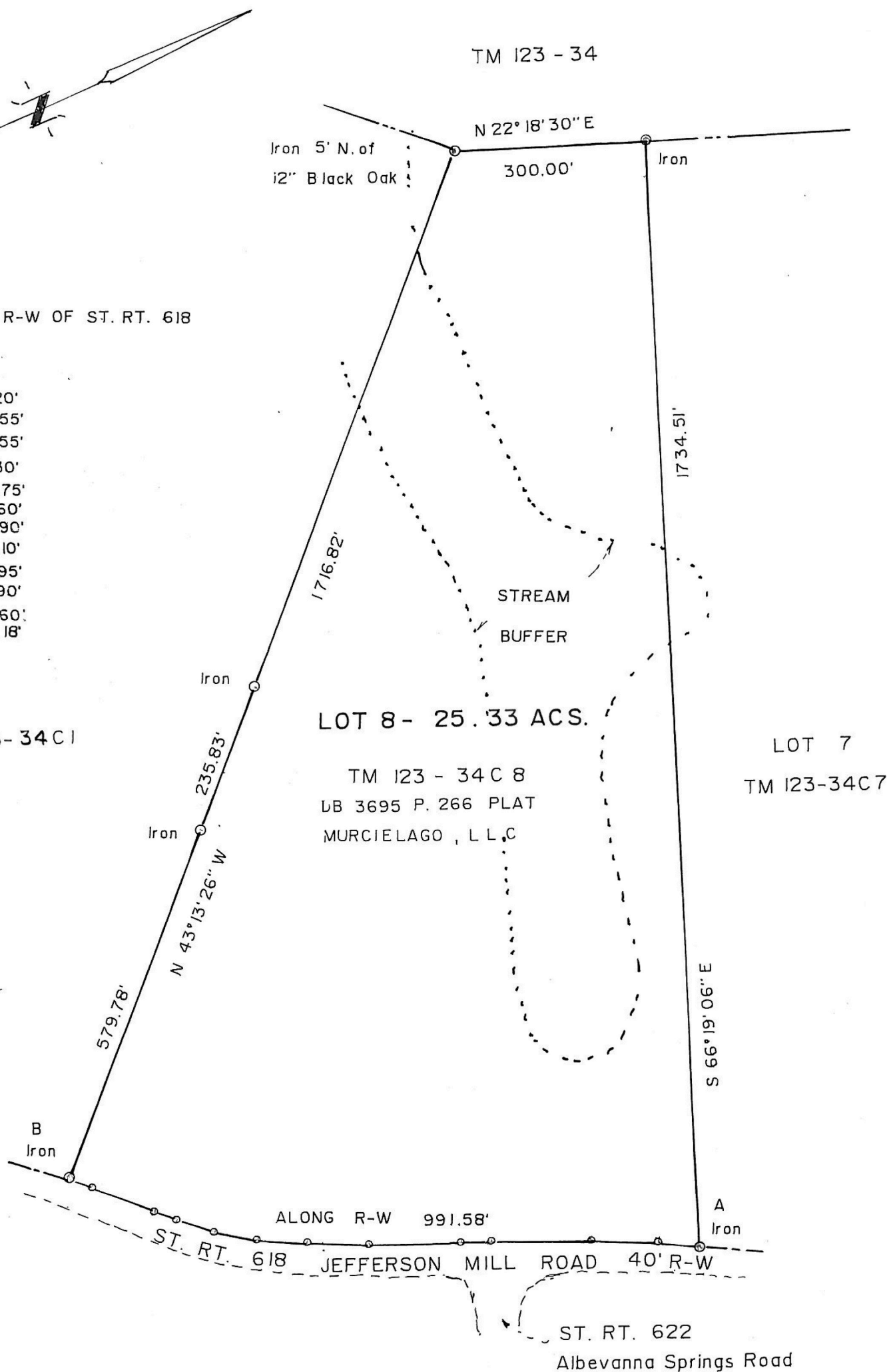


COURSES ALONG R-W OF ST. RT. 618
FROM A TO B

S 32°34'30" W	59.20'
S 29°42'00" W	108.55'
S 26°43'30" W	156.55'
S 26°29'40" W	45.30'
S 25°51'00" W	143.75'
S 27°21'20" W	95.60'
S 31°03'50" W	74.90'
S 36°09'40" W	64.10'
S 40°58'50" W	60.95'
S 43°58'00" W	38.90'
S 44°23'00" W	105.60'
S 43°38'20" W	38.18'

TM 123-34C1

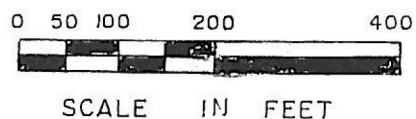


PLAT SHOWING - LOT 8

" THE FARMS of JEFFERSON MILL "

SCOTTSVILLE MAGISTERIAL DISTRICT
ALBEMARLE COUNTY, VIRGINIA

W. MORRIS FOSTER
LAND SURVEYOR
NELLYSFORD, VA.



OCT. 26, 2010