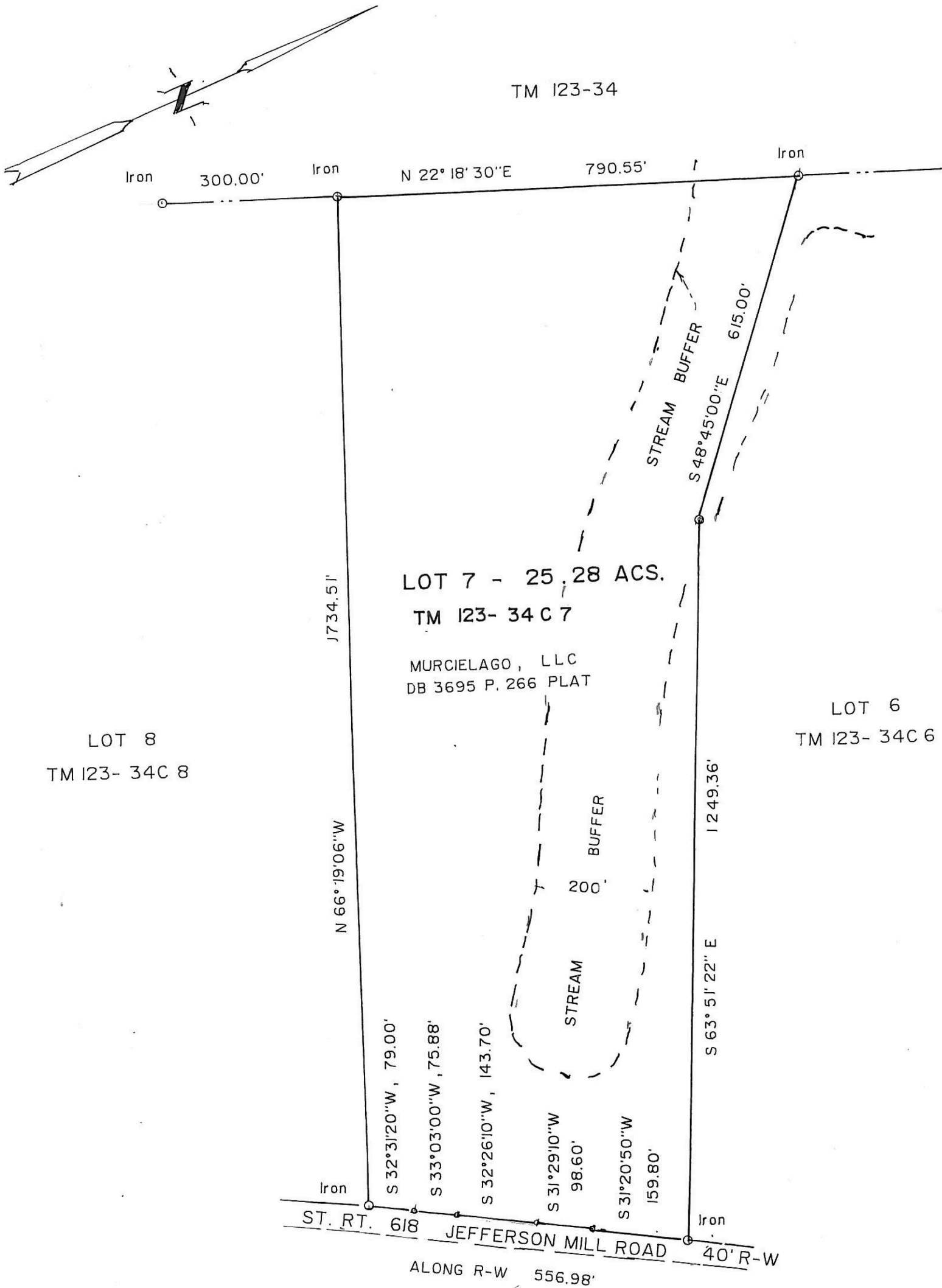


TM 123-34



LOT 8  
TM 123- 34C 8

LOT 7 - 25.28 ACS.  
TM 123- 34 C 7

MURCIELAGO, LLC  
DB 3695 P. 266 PLAT

LOT 6  
TM 123- 34C 6

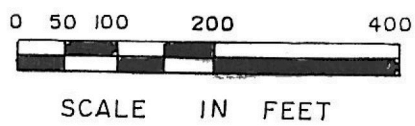
PLAT SHOWING - LOT 7

" THE FARMS of JEFFERSON MILL "

SCOTTSVILLE MAGISTERIAL DISTRICT  
ALBEMARLE COUNTY, VIRGINIA

W. MORRIS FOSTER  
LAND SURVEYOR

NELLYSFORD, VA.



OCT. 26, 2010