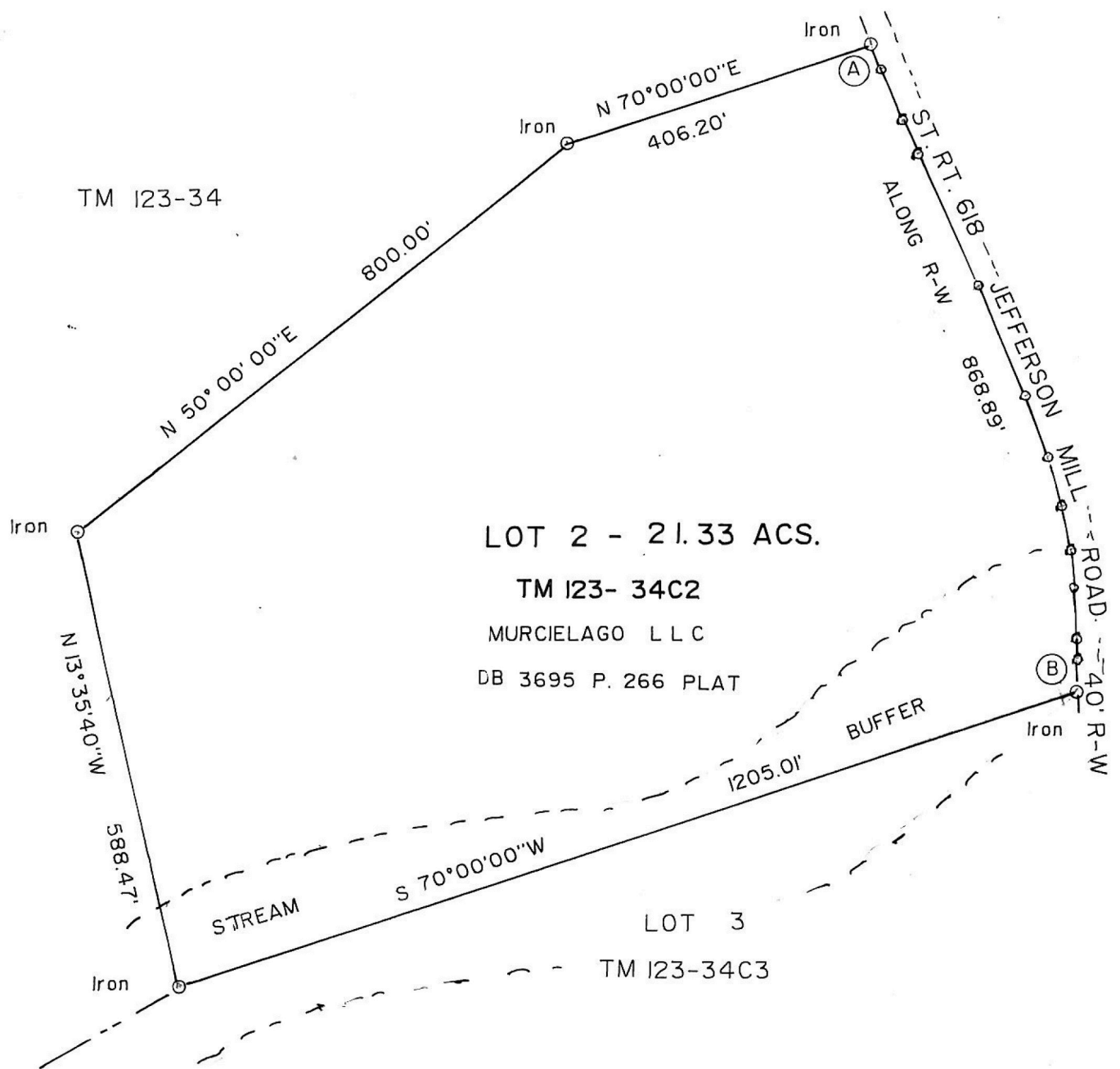
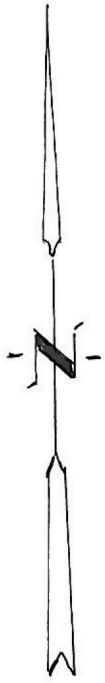


COURSES ALONG ST. RT. 618 R-W  
FROM (A) TO (B)

S 21° 09' 50" E	33.37'
S 23° 47' 40" E	76.60'
S 24° 41' 50" E	48.85'
S 25° 56' 20" E	179.43'
S 24° 33' 50" E	155.20'
S 21° 07' 30" E	79.35'
S 18° 03' 10" E	64.60'
S 13° 22' 40" E	55.45'
S 07° 44' 50" E	47.05'
S 02° 27' 10" E	64.20'
S 02° 49' 10" W	27.85'
S 00° 46' 50" E	36.74'



LOT 2 - 21.33 ACS.  
TM 123- 34C2  
MURCIELAGO L L C  
DB 3695 P. 266 PLAT

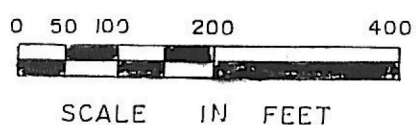
LOT 3  
TM 123-34C3

PLAT SHOWING - LOT 2

" THE FARMS of JEFFERSON MILL "

SCOTTSVILLE MAGISTERIAL DISTRICT  
ALBEMARLE COUNTY, VIRGINIA

W. MORRIS FOSTER  
LAND SURVEYOR  
NELLYSFORD, VA.



OCT. 26, 2010